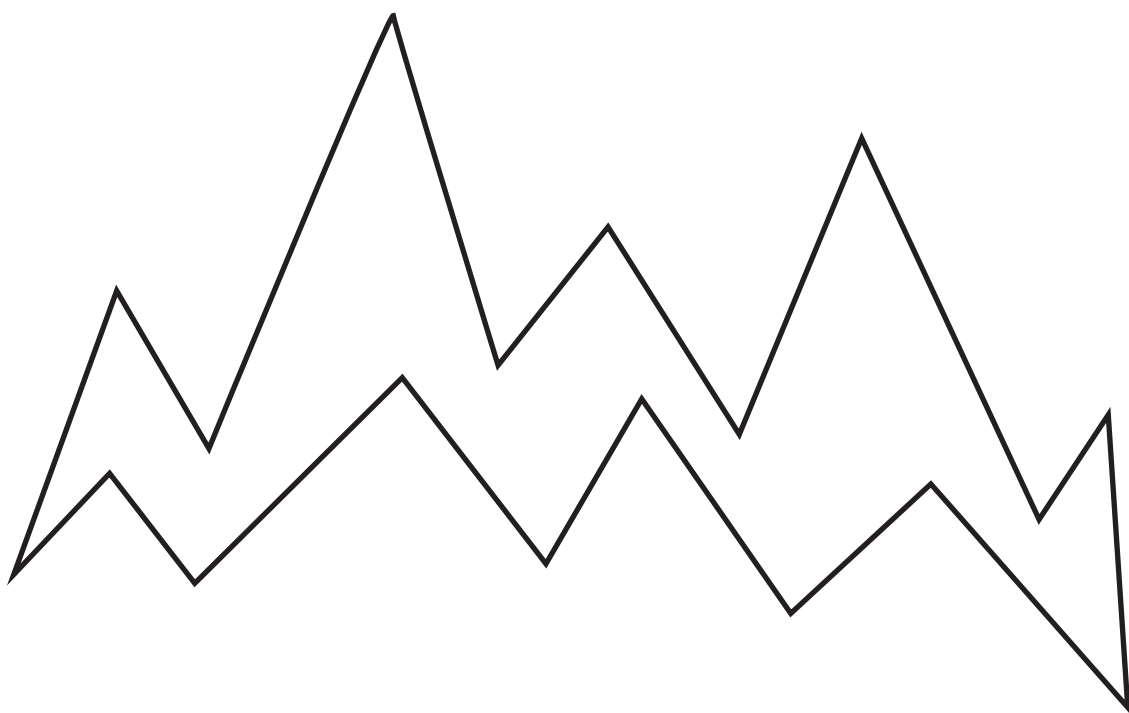


neverdark<sup>x</sup>

# Neverdark CHALET-I 650 (in)

Smart fireplace



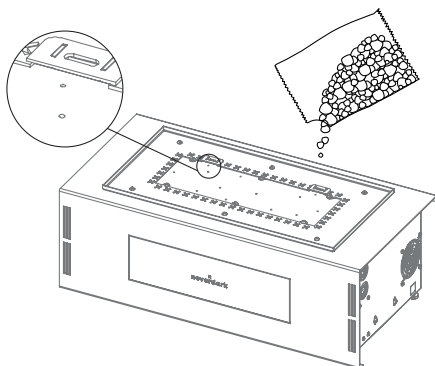
LOGSET MANUAL

## SET UP SCHEME



- Decorative stones and logs are a part of the fireplace. It is not designed to function without them completely, although you can reduce the quantity.
- Never cover the candle, or the pyrosensor with the decorative elements completely. It will affect fireplace functions.
- Always spread the decorative stones in one layer across the burner.
- Place some amount of logs on one-another. It will lift up the flame and help it to spread across the burner.
- Do not overdo the quantity of logs, or stones. It will affect fireplace functions.
- This manual is a set of recommendations. Please feel free to use any layout of your choice without blocking the candle or the pyrosensor.

### Step 1

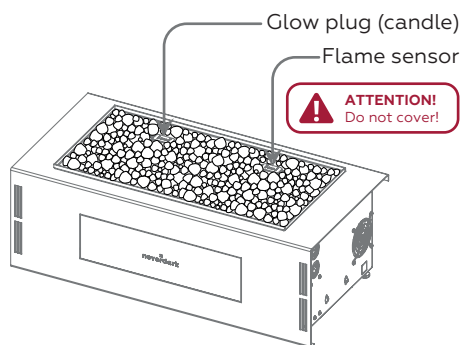


Open the bag. Put the stones on the burner. Try not to close the holes on a surface of the burner fully.

### Step 3

Put the decorative logs on the stones, using the scheme below:

### Step 2



Spread the stones across the burner. Stones should be spread evenly in one layer. Without laying on one-another.

### Step 4

This scheme is only an example of how the logs could be placed. Please feel free to place them as you would like, without covering the candle, or the pyrosensor completely.

## EXAMPLE OF FIREWOOD LOCATION

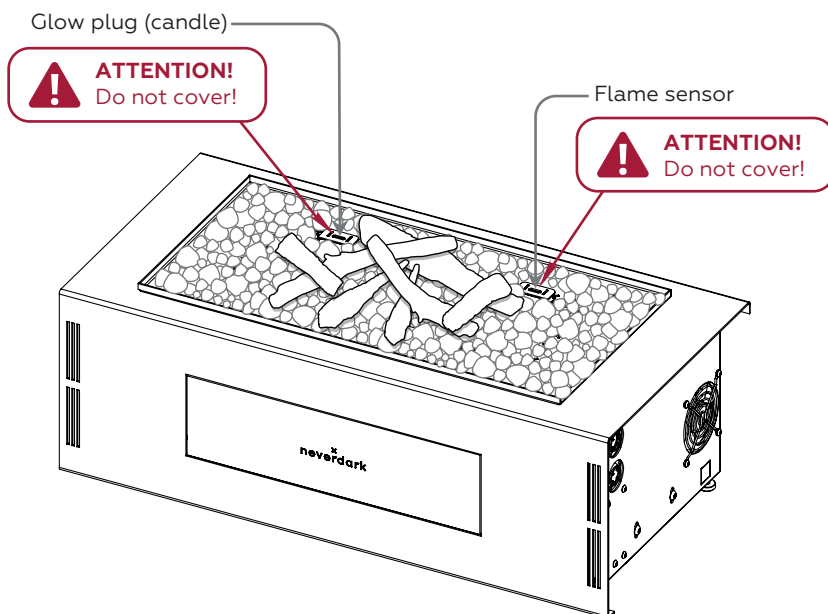


Scan for live example  
of a log setup

This scheme is not the only possible option. Please feel free to create your own layout following the logic and recommendations in this manual.

We strongly recommend to use the decorative elements that are being supplied with the fireplace only.

The manufacturer can not be responsible for a correct fireplace work with third party decorative elements.



Do not use ANY flammable objects as decorations!

NEVERDARK LLC

63 Hetmana Doroshenka st.  
Chernivtsi, Ukraine

[neverdark.one](https://neverdark.one)